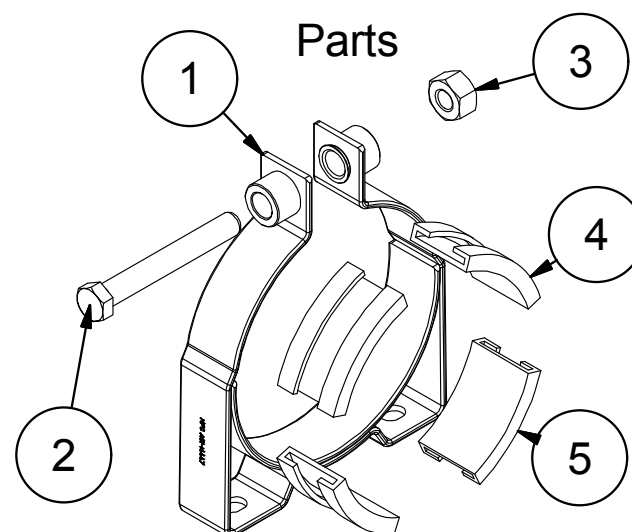




MPC Clamps, Inc.  
3130 N Fry Rd  
Suite 500  
Katy, TX 77449

E: info@mpc-clamps.com  
T: 1-281-206-7856

PARTS LIST			1 Clamp
Item	Qty	Description	Material
1	1	Clamp body single bolt	Steel Zn plated
2	1	Hex cap screw 7/16x3.25	Zinc plated, steel, mild
3	1	Hex nuts 7/16	Zinc plated, steel, mild
4	2	Upper protection rubber	EPDM rubber shore hardness 65°±5°
5	2	Lower protection rubber	EPDM rubber shore hardness 65°±5°



## Required tooling

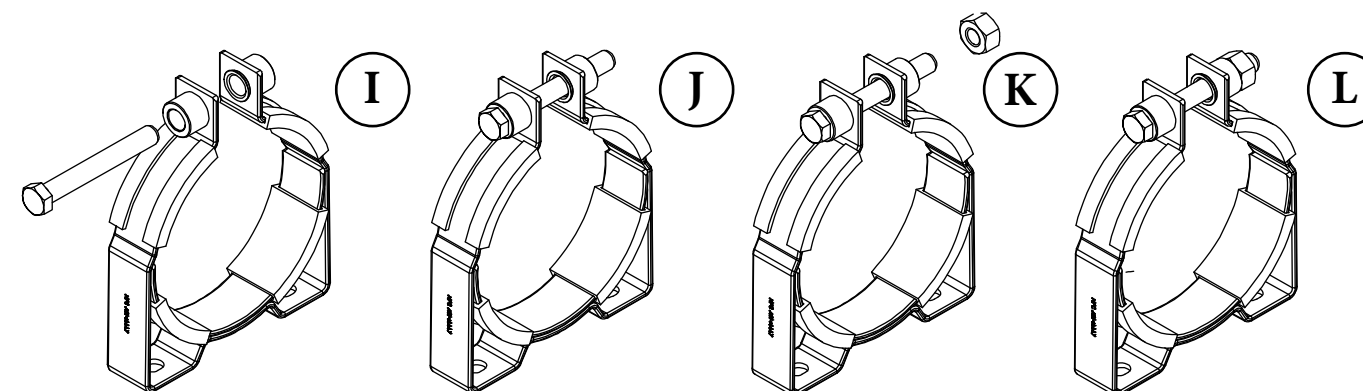
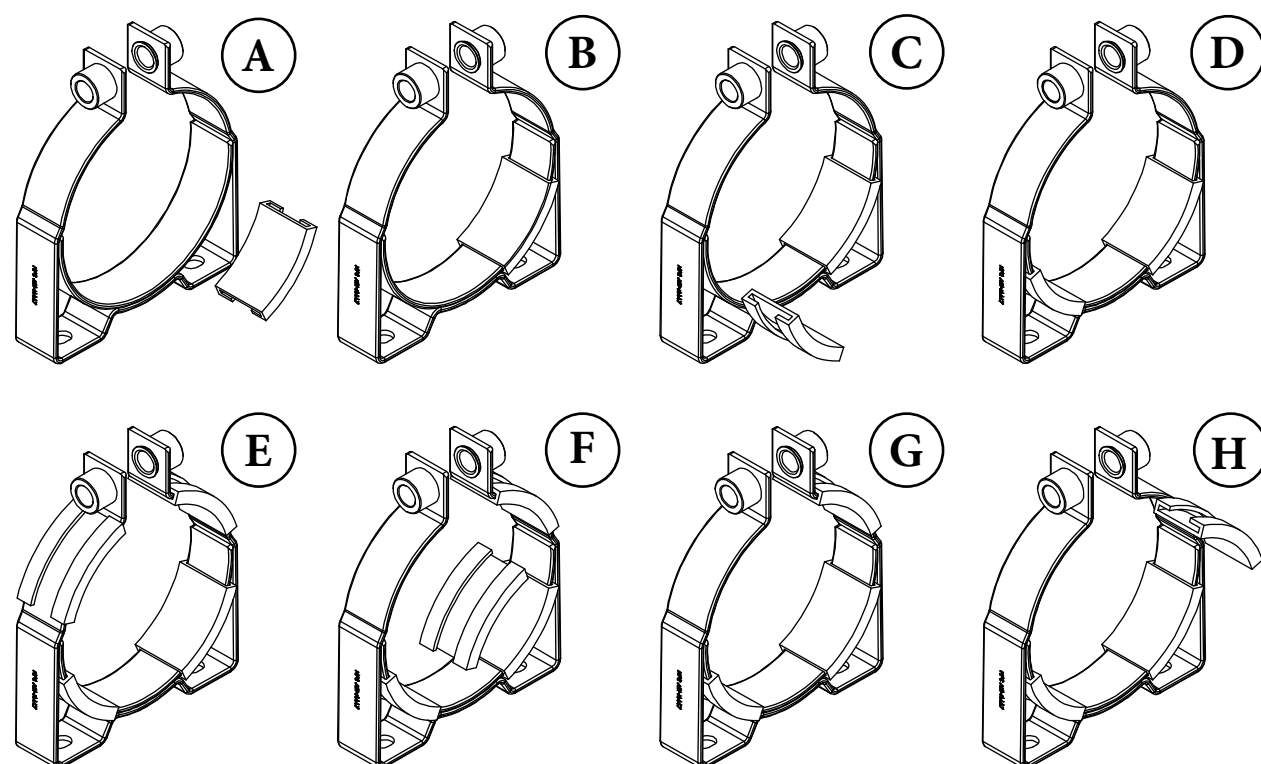
- Spanner
- Torque wrench
- Level tool

## Recommended protection measures

- Safety gloves
- Safety goggles

## Accumulator assembly recommendations

For the positioning and assembly of any hydraulic accumulator above 50 Lbs. we advise to always use an accumulator lifting cap. Please refer to your accumulator supplier for this.



## Instructions

### Assembly of rubber onto clamp

*We advise you to use safety gloves for the assembly of the clamp*

1. Place lower protection rubbers (item no. 5) on to the inside of the lower clamp half and fold edges of the rubber over the clamp band, as shown in images A, B, C and D.
2. Place upper protection rubbers (item no. 4) on to the inside of the upper clamp half and fold edges of the rubber over the clamp band, as shown in images E, F, G and H.

### Mounting of clamp onto wall / frame / etc.

*We recommend you to mount your clamp onto a stable surface and to always use a levelling tool. The mounting materials used should be in accordance with the mounting holes already present on the clamp. The mounting holes are located on the bottom of the mounting part of the clamp and are NOT the same holes as the holes for the hex cap screw.*

### Positioning of accumulator

*Position your accumulator into the open clamp(s) as described by your accumulator supplier.*

### Tightening hex cap screw and closing clamp

*Adjust your torque wrench to the advised torque level of 35nm*

1. Place the hex cap screw (item no. 2) fully through the bolt holes until the cap (head) of the screw touches the spacer, as shown in images I and J.
2. Place the hex nut (item no. 3) on the end of the hex cap screw, as shown in images K and L.
3. Place the spanner on the bolt head.
4. Place the torque wrench on the hex nut.
5. Hold the spanner steady and use the torque wrench to reach the advised torque level.
6. Check if accumulator is mounted securely.

The sole purpose of this product manual is to provide instructions for mounting the accumulator clamps as supplied by MPC Clamps, Inc. Please keep in mind that MPC Clamps, Inc. manufactures nor sells accumulators and is in no way liable for any damage or injury involving the handling, moving or mounting of accumulators itself.